

光碟機/讀卡器二合一

CD/DVD-ROM and CardReader, all in one USB.

介面 USB2.0,容量 32G,SDHC,ISO9660/UDF

Interface: USB2.0

Memory Capacity: 32G, SDHC, ISO9660/UDF

可燒錄 ISO 映像檔,模擬 USB 光碟機

CardRom can write ISO image file into memory card, and emulate as USB DVD-ROM.

隨插即用,免驅動程式

Plug and play, no driver needed.

無光碟機蕊,低耗電,使用壽命長

CardRom has no CD/DVD-ROM Motor/Optical device. CardRom is low power consumption, and long life for use.



免用光碟片,無耗材,省錢又環保

CD and DVD are not needed, no consumables, save your money and environmental protection.



USB 供電,免外接電源變壓器

Use USB power, power adapter is not needed.



專利前插式結構,比隨身碟更輕薄短小,易攜帶

Patent: USB plug with a built-in-card-reading slot. Patent No.: US 4575481 B1

CardRom is smaller and thinner than flash drives (thumb disk) and is simply to carry.



Patent: USB plug with a built-in-card-reading slot.

防寫開關,拒絕隨身碟病毒

CardRom has a swith for writing and no-writing. prevent for Virus infect.



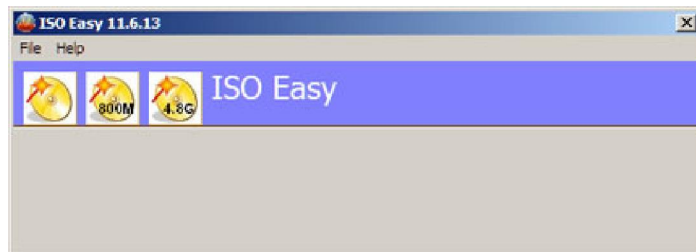
超窄機身,筆電 USB 插槽專用,可與 USB 產品並插

CardRom is so thin that can plug in beside with other USB products, especially for USB mouse.



本身內建 ISOEasy,Win32/64 免安裝即可燒錄

There is ISOEasy program inside CardRom, so you can burn ISO image file and don't need to download/install Win32/64 OS.

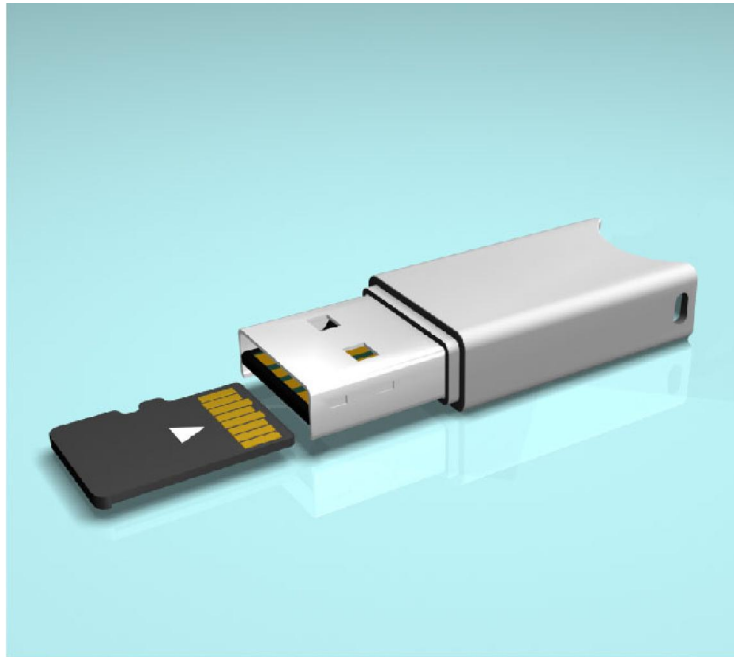


Windows/MacBook 適用

Windows and MacBook compatible.



專利前插式卡槽，最小的 USB 光碟機，內載搭配自行研發的 ISOEasy，
CardRom owns a "USB plug with a built-in-card-reading slot" patent, it is the smallest
USB CD/DVD-ROM drive and
there is a ISOEasy program that invented by our R&D team.



免安裝，操作簡單，在 Windows 下輕鬆燒錄 ISO 映象檔。
CardRom can be burned ISO image file under Windows without installation, it's
green and easy to operate.

ISOEasy 使用說明

How to use ISOEasy

- 1.由 USB 端插入卡片
- 1.Insert SD card to USB port of CardRom



Patent: USB plug with a
built-in-card-reading slot.

2. 後端指撥開關,對應到藍燈(記憶卡可寫入),紅燈(記憶卡防寫也不能燒錄).

每次切換要重插拔 USB 才能生效

2. The swith is on the back of CardRom, when the light is blue, it's mean the memory card can be wrote;
but when the light is red, it's mean the memory card can not be wrote.

You need to take off the CardRom and plug in again, the the usb is working.



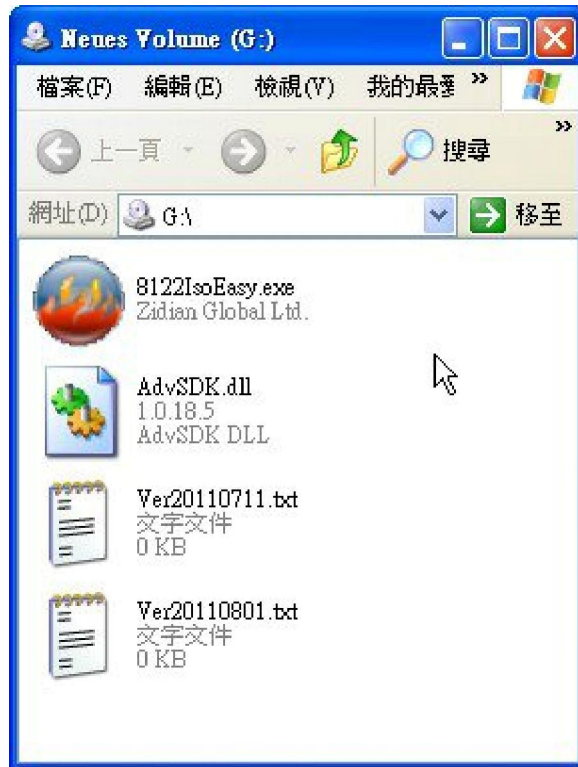
3.裝上空白卡插入電腦,會看到一光碟機及一卸除式磁碟 (G: F:)

3.Plug the CardRom with blank SD card into computer, you can find a Neues Volume(F:) and a removable disk(G:)



4.光碟機 G:內載 ISOEasy 燒錄程式,至此表示 USB 正常

4. There is a ISOEasy burned program in the G:, that mean USB is good for use.



5.卸除式磁碟 F:等同一般的讀卡器,若可讀寫表示 TF 卡正常

5. Removable disk F: is the same as a card reader, if it can be wrote, that mean TF card is good for use.

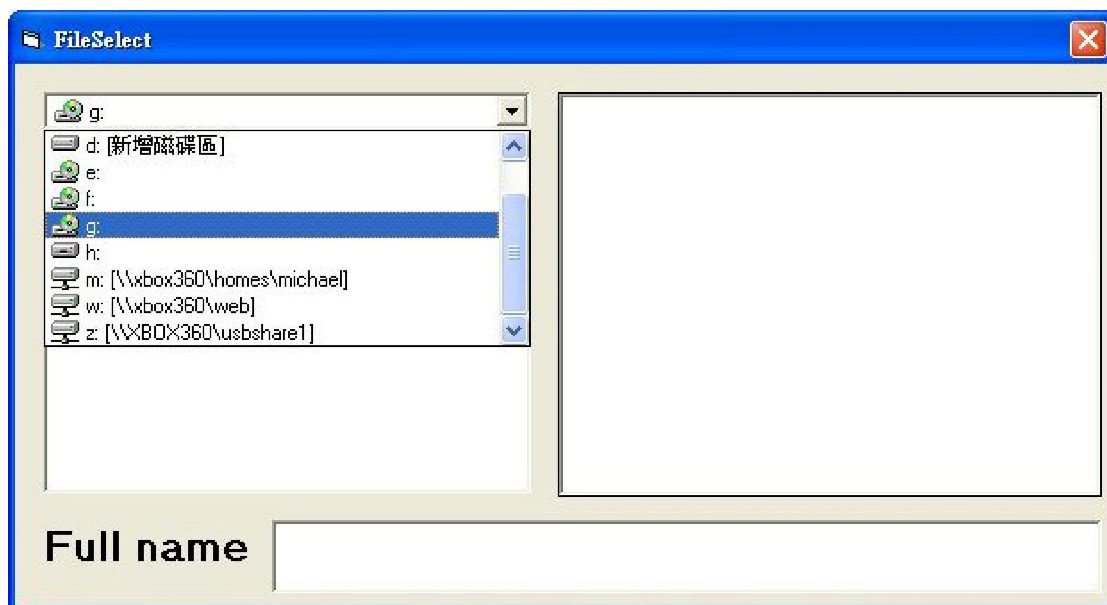
6.執行 ISOEasy

選擇您要燒錄的 ISO 映像檔

6.Run ISOEasy

Choose the ISO image file to burn





有三種燒錄模式,最左是緊縮模式,虛擬出之光碟機僅會佔用 ISO 所需的大小,

There are 3 burned modes, the left is compact mode, it will only invent the space that ISO needed of CD Rom,



中間是 CD 模式,虛擬出之光碟機會固定佔用 800MB,

In the middle is CD mode, it will invent the space of CD Rom be fixed 800MB



再來是 DVD 模式, 虛擬出之光碟機會固定佔用 4.8G。

And then it's DVD mode, it will invent the space of DVD Rom be fixed 4.8G



共有三種燒錄選擇, 主要的考量在於緊縮模式目的在簡省空間, 而 CD 模式與 DVD 模式的優勢在於能在重新寫入 ISO 時能不刪除卸除式磁區的資料。

能夠把固定的 800MB 或 4.8G 模擬成一個固定的 "可讀寫" 光碟片, 如此便能重複的對光碟區部分更新資料, 不會導致卸除式磁碟區資料遭刪除。

You can have 3 modes to choose, the top important considerations is the compact mode can save space, and the excellent of CD mode and DVD mode is when you writing ISO, CardRom will not remove the data of removable sector(re-format).

CardRom can fixed 800MB or 4.8G and invent a fixed "readable" disk, so CardRom can repeated to update data of disk, and will not cause the data of removable disk be deleted(re-format).

PS: 緊縮模式就像是一般隨身碟玩量產, 每次重新寫 ISO 就會把卸除式磁碟區的部分也格式化, 原因是因為必須做 "磁碟重新切割", 而光碟模式則是 "先行切割了光碟" 出來, 當 ISO 重寫, 不再重新切割, 便能保留了卸除式磁區的資料。

PS: Compact mode just like normal flash drives (thumb disk) runs mass production, when start to write ISO every time, it will format the removable sector, the reason is we need to do "cutting disk space again", and CD mode is "cutting CD space first", when we re-write ISO, we don't need to cut again, so we can keep the data of removable sector.

7. 取消光碟映像所佔用的 TF 卡空間

7. Canceled the space of CD partition that the disk image occupation of TF card



8.燒完後,重插拔後,又會產生一個光碟機.請注意,磁碟代號也改變了(ref to 3)

8.After you burned the ISO, take off the CardRom and then plug in again, now you can find a disk named "THINPC 7 32BIY BOOTABLE IBS", you can find out the diskletter order and it's name is changed(ref to 3)



9.開機,CR111,bios 會看到三個裝置

Zidian DVDROM

Zidian CDROM

removable device

9.Reboot with CR111, bios will find 3 external bootable device as following,

Zidian DVDROM

Zidian CDROM

removable device

正常您如果要用所燒錄的 ISO image 開機,選 Zidian DVDROM,但有的 bios 不能用外部光碟機開機(這種通常是有內部光碟機的 NB),請聯絡客服是否有 new bios updated?

這種不支援 USB CDROM,當然也不支援卡碟機

但有的 bios 只選擇到 external device,通常還有子選單

但有的 bios 只選擇到 USB cd rom,通常還有子選單,此例中要再加選 Zidian DVDROM 或 Zidian CDROM

In Normal period, if you wan to use the ISO image that you burned to reboot, then choose Zidian DVDROM, but some kind of bios can't use the external DVD ROM to reboot (usually it is a NB which with internal DVD ROM), please contact with customer service if there is new bios updated or not?

It doesn't support USB CDROM, generally it doesn't support card drives

But some kind of bios, only can choose external device, generally there is submenu.

And some other kind of bios, only can choose USB cd rom, generally there is submenu, for this kind, you need choose Zidian DVDROM of Zidian CDROM again.